

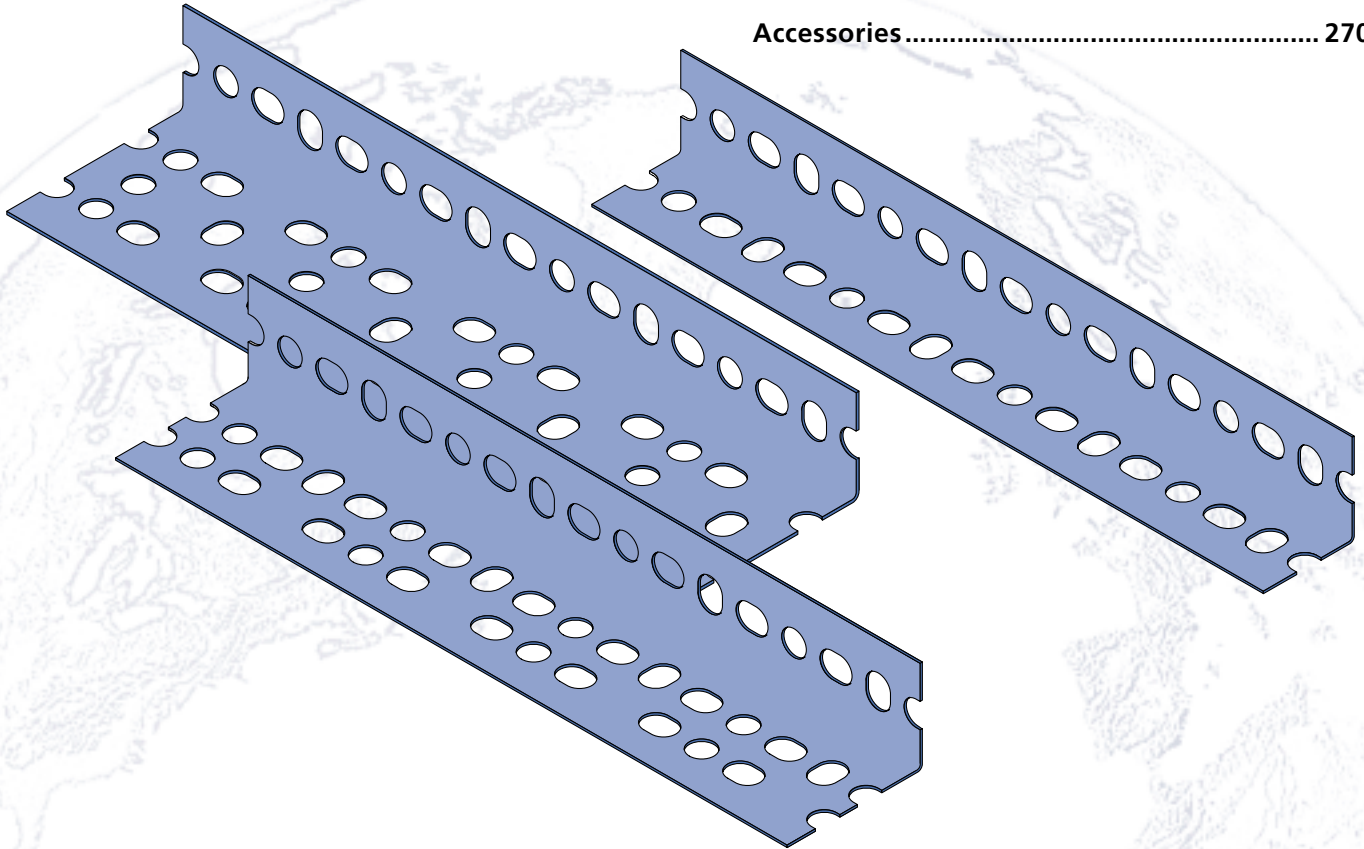


UNISTRUT®

PRIMEANGLE™

PrimeAngle 270

Accessories 270



MATERIAL

STEEL: PLAIN

12 Gauge (.105" 1.0 mm) and 14 Gauge (.076)
ASTM 1011 SS GR 33

STEEL: PRE-GALVANIZED

12 Gauge (.105" 1.0 mm) and 14 Gauge (.076)
ASTM A653 GR 33

FINISHES

Available in two durable, long-lasting finishes.
Pre-galvanized (PG) or Perma-Green (GR) conforming to
ASTM B633 Type III SC1.

STANDARD LENGTHS

Standard lengths are 10' and 12'. Slotted angle is shipped in
ten-piece bundles complete with 75 pieces of 3/8" - 16 x 3/4"
hex head bolts and 3/8" nuts.

ORDERING INFORMATION:

When ordering, add the length or size and finish to the
part number.

DIMENSIONS

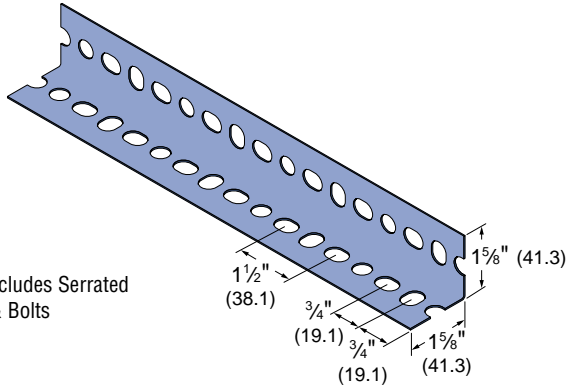
Imperial dimensions are illustrated in inches. Metric
dimensions are shown in parenthesis or as noted. Unless
noted, all metric dimensions are in millimeters and rounded
to one decimal place.



PA 158

Light Duty

(1⁵/₈" x 1⁵/₈" x 14 ga.) Wt/100 Ft.: 66 lbs (29.9 kg)

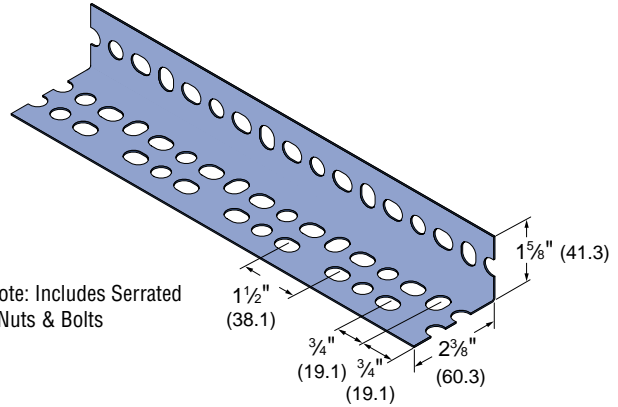


Note: Includes Serrated Nuts & Bolts

PA 238

Medium Duty

(1⁵/₈" x 2³/₈" x 14 ga.) Wt/100 Ft.: 80 lbs (36.3 kg)

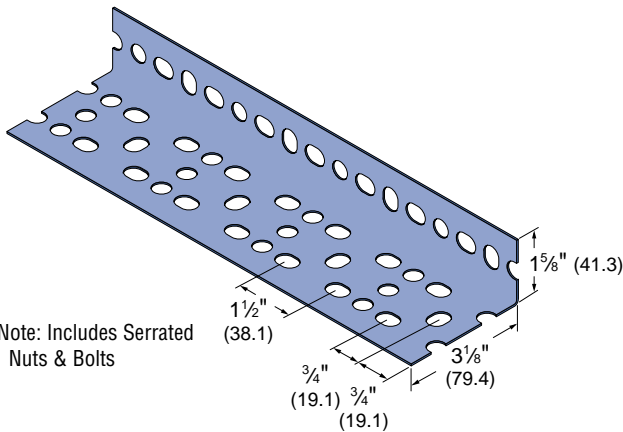


Note: Includes Serrated Nuts & Bolts

PA 318

Heavy Duty

(1⁵/₈" x 3¹/₈" x 12 ga.) Wt/100 Ft.: 130 lbs (59.0 kg)

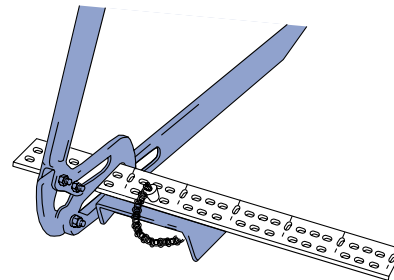


Note: Includes Serrated Nuts & Bolts

PA 1HDC

Portable Cutter

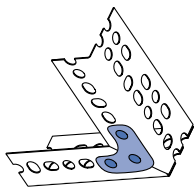
Wt/100 pcs: 17 lbs (7.7 kg)



PA 1GP

Gusset Plate

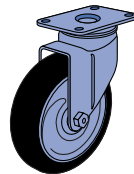
Wt/100 pcs: 9 lbs (4.1 kg)



PA 1SC

Swivel Caster

Wt/100 pcs: 170 lbs (77.1 kg)



PA 1RC

Rigid Caster

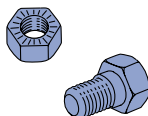
Wt/100 pcs: 110 lbs (49.9 kg)



PA 1SNB

Serrated Nuts and Bolts

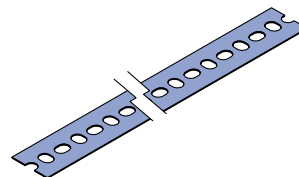
Wt/100 pcs: 7 lbs (3.2 kg)



PA 1RP

Slotted Strap

Wt/100 pcs: 35 lbs (15.9 kg)



15/8" Channel
 Telestrut System
 Nuts & Hardware
 General Fittings
 Pipe/Conduit Supports
 Electrical Fittings
 Concrete Inserts
 1 1/4" Framing System
 1 3/16" Framing System
 Fiberglass System
 Special Metals
 PrimeAngle System
 Product Index